

# Protect Your Home and Family from Wildfires

Chief David Pucci, Central County Fire Department  
Richard Holtz, Burlingame Parks Superintendent/City Arborist



**June 28, 2025**

presented by **Burlingame Neighborhood Network**

---

# Protect Your Home and Family from Wildfires

## Agenda

1. Addressing dangerous trees on a neighbor's lot
2. Who clears my easement?
3. What is my wildfire risk? See the new California Fire Map
4. Protecting my family and home from wildfire
5. What evacuation steps should I know, any surprises from the LA fires?



# Trees: Benefits and Challenges

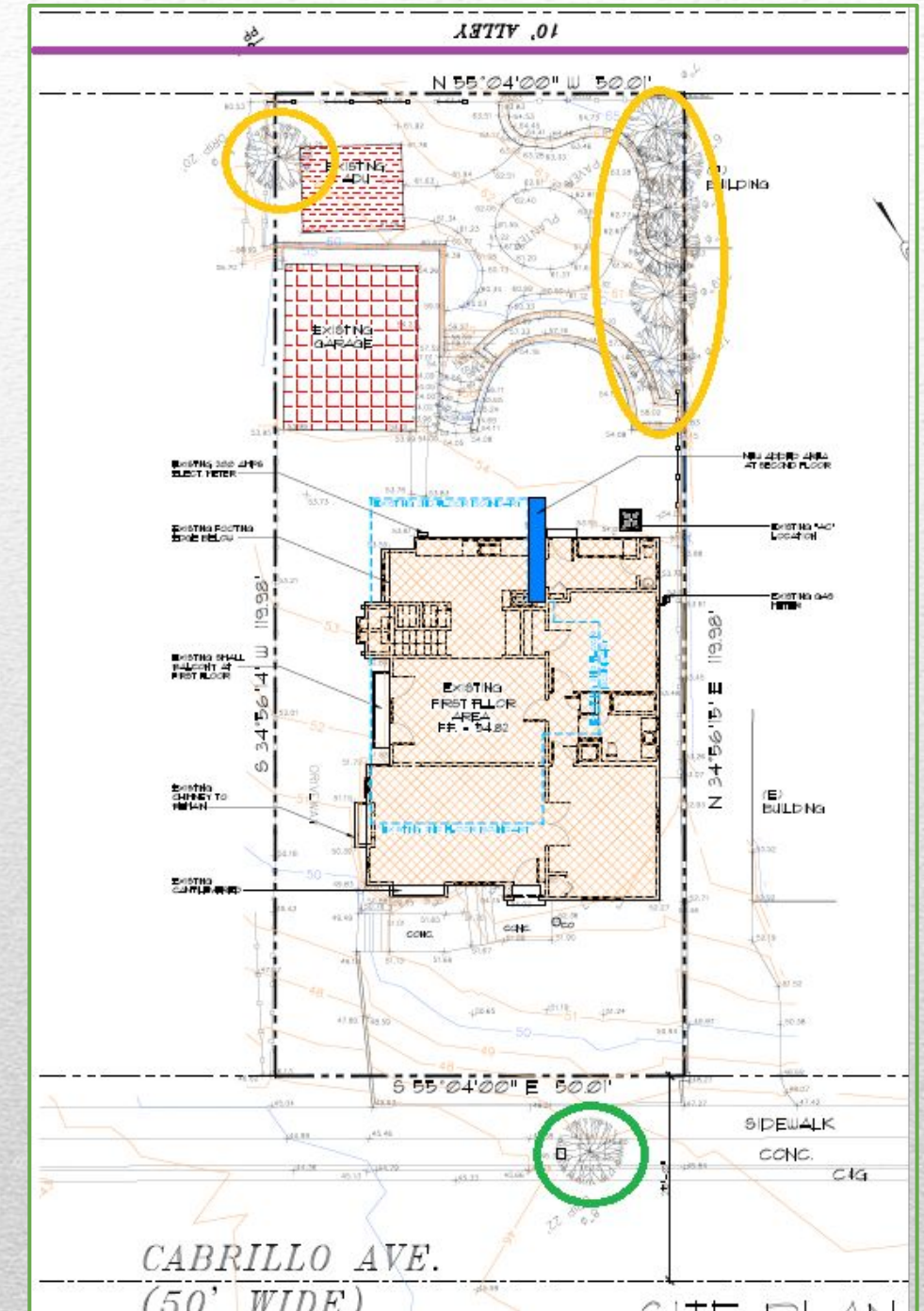
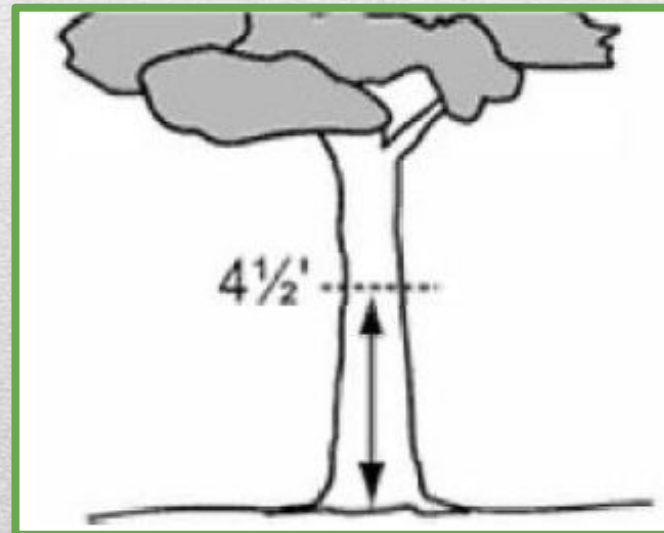


- ❖ Essential to Health, Welfare and Quality of Life
- ❖ Prized, Valued and Protected in the Community of Burlingame
- ❖ Can increase Liability and Fire Risk if not maintained
- ❖ Burdensome/costly to maintain



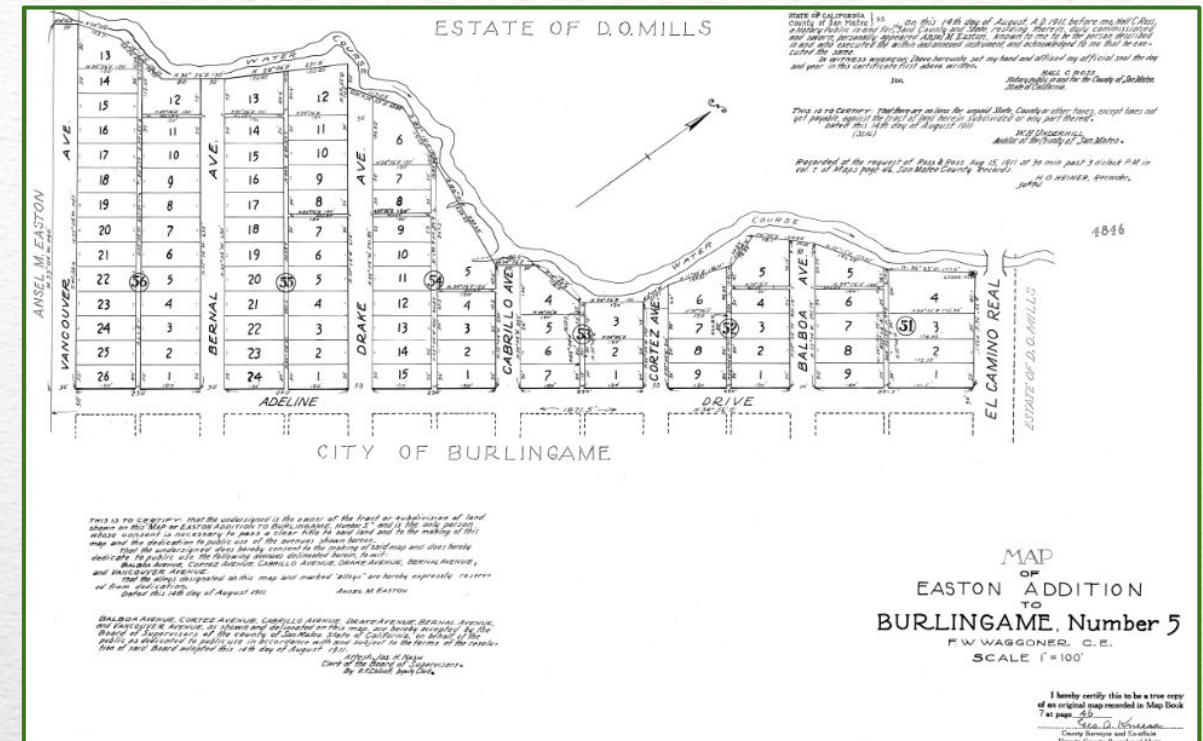
# Trees: Ownership?

- ❖ City maintained
- ❖ Private protected
- ❖ Private non-protected
- ❖ What about easements???



# Who Clears My Easement?

- ❖ Most are private property responsibility
- ❖ Some are City-owned
- ❖ PW acts out of an abundance of caution



THIS IS TO CERTIFY: that the undersigned is the owner of the tract or subdivision of land shown on this "MAP OF EASTON ADDITION TO BURLINGAME, Number 5," and is the only person, whose consent is necessary to pass a clear title to said land and to the making of this map and the dedication to public use of the avenues shown hereon.

That the undersigned does hereby consent to the making of said map and does hereby dedicate to public use the following avenues delineated herein, to-wit:

BALBOA AVENUE, CORTEZ AVENUE, CABRILLO AVENUE, DRAKE AVENUE, BERNAL AVENUE, and VANCOUVER AVENUE.

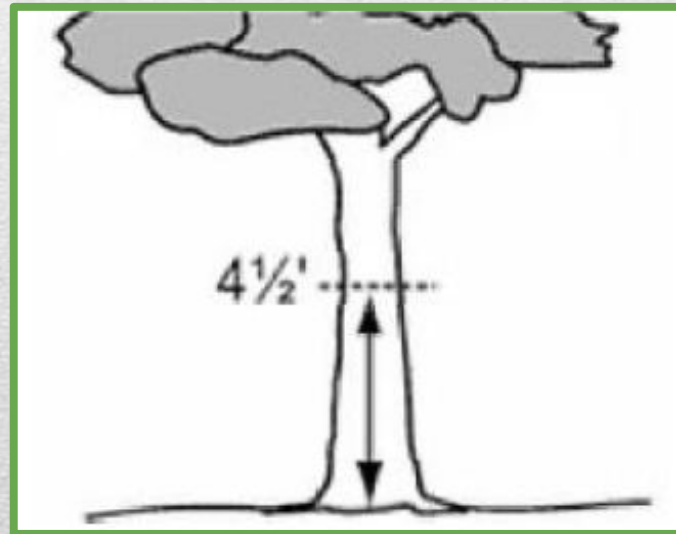
That the alleys designated on this map and marked "alleys" are hereby expressly reserved from dedication.

Dated this 14th day of August 1911.

ANSEL M. EASTON

# Trees: How to Address Concerns

- ❖ City maintained? 650-558-7330 or [parkadmin@Burlingame.org](mailto:parkadmin@Burlingame.org)
- ❖ Your tree? 650-558-7330 or [parkadmin@Burlingame.org](mailto:parkadmin@Burlingame.org)
- ❖ Neighbors tree? Talk With Your Neighbor...Then Call Us 😊

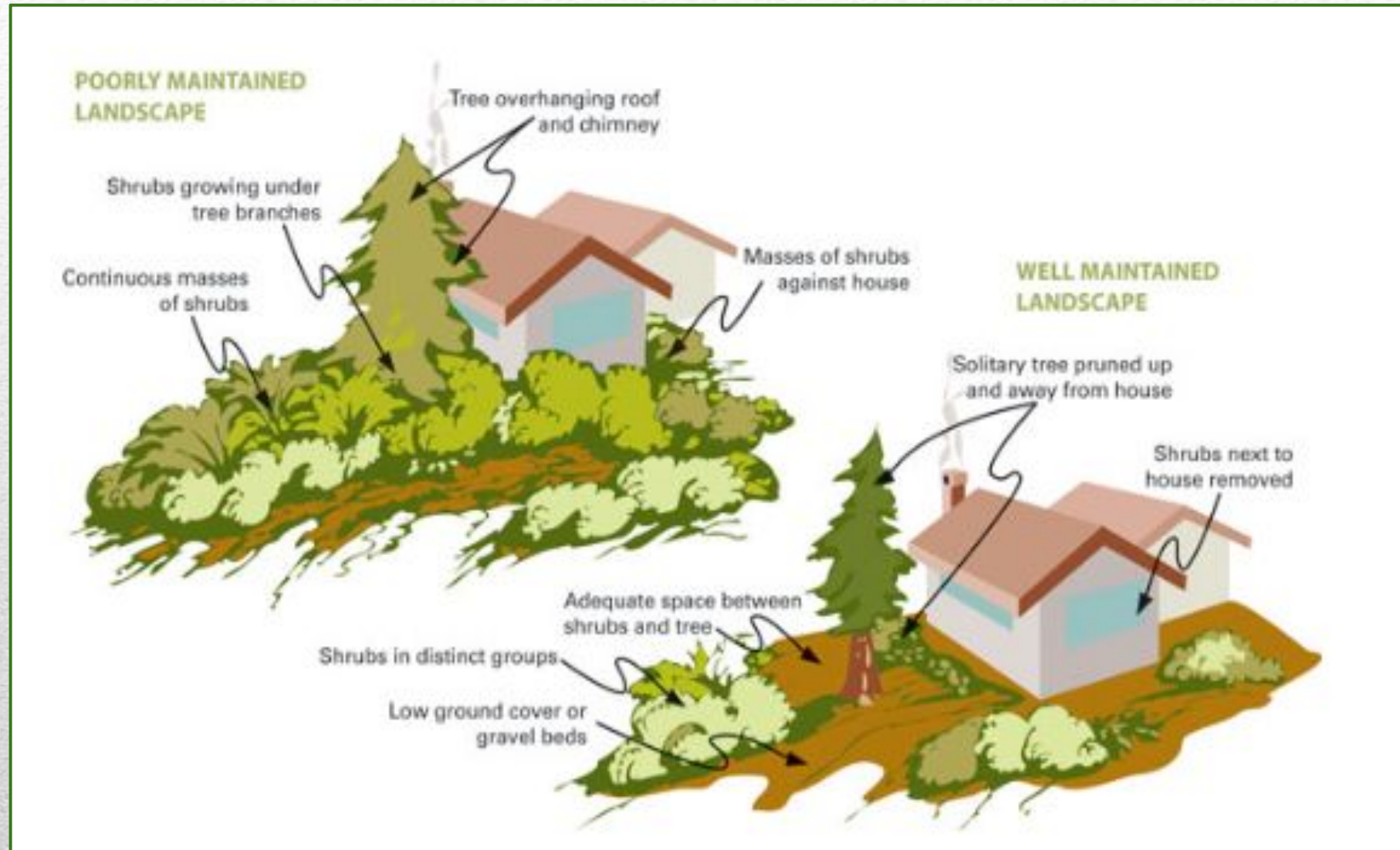


# Trees: How to Spot a Hazard Tree



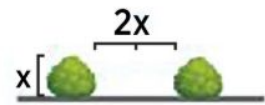
# Trees: Healthy Fire Defense

- ❖ Location, Location, Location
- ❖ Climate-Adapted Species
- ❖ Reduce Ladder Fuels (limb up)
- ❖ Reduce Fuel Load
- ❖ Maintain Healthy Vigor

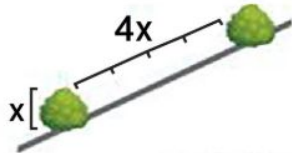


# Trees: Wildland Urban Interface (WUI)

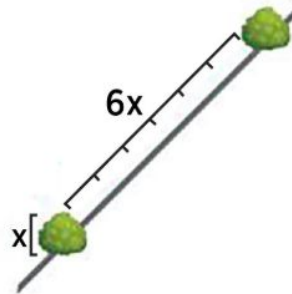
## Shrubs



Flat to Mild Slope (less than 20%)

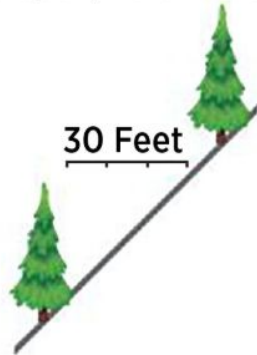
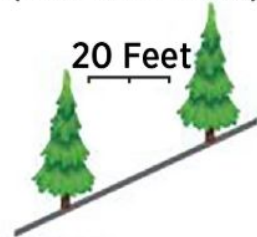
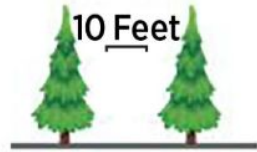


Mild to Moderate Slope (20%-40%)

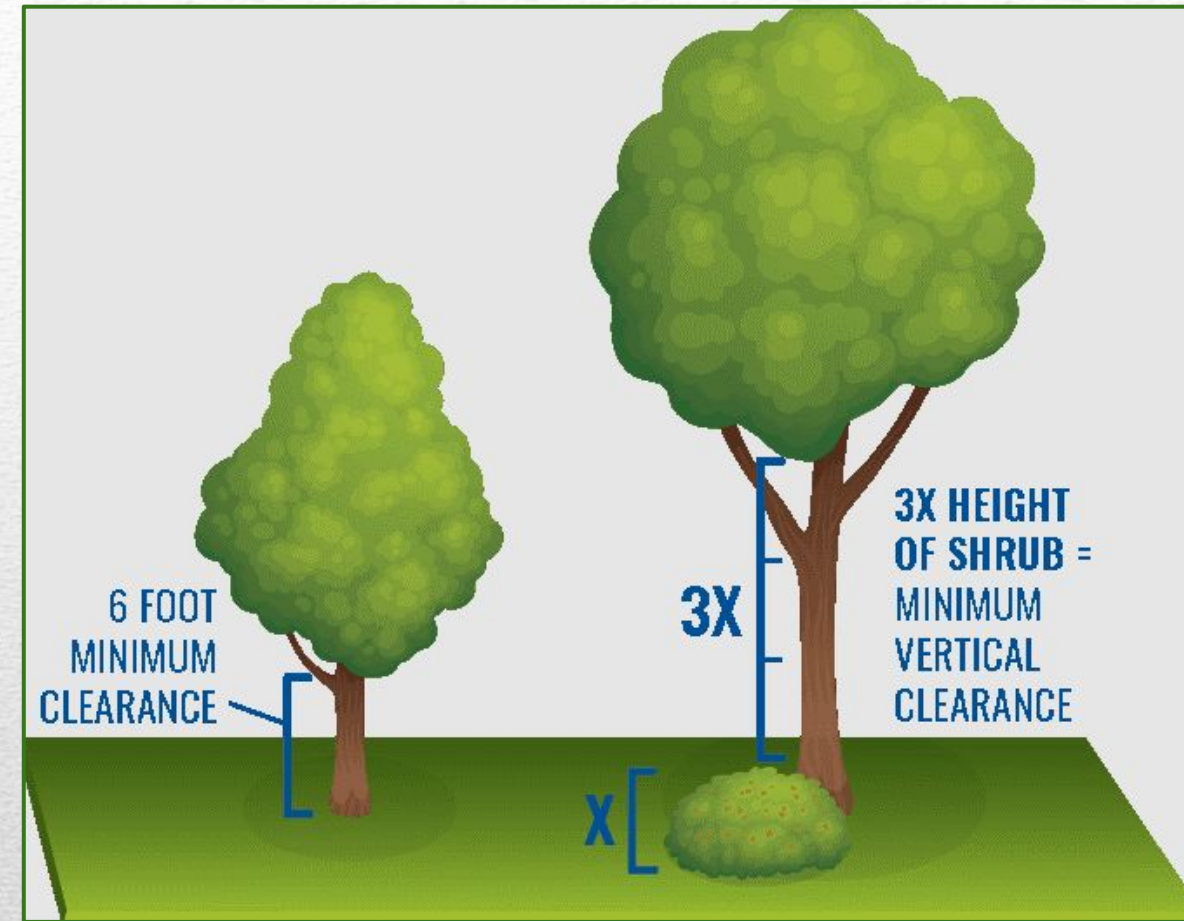


Moderate to Steep Slope (more than 40%)

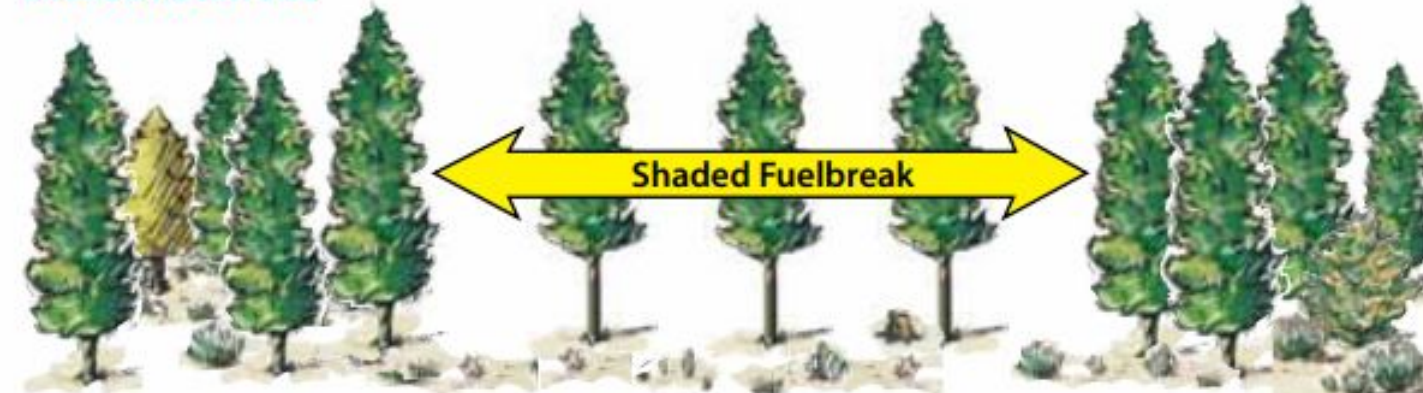
## Trees



- ❖ Clear Undesirables
- ❖ Remove Ladder Fuels
- ❖ Reduce Fuel Load
- ❖ Maintain Sustainable Vegetation

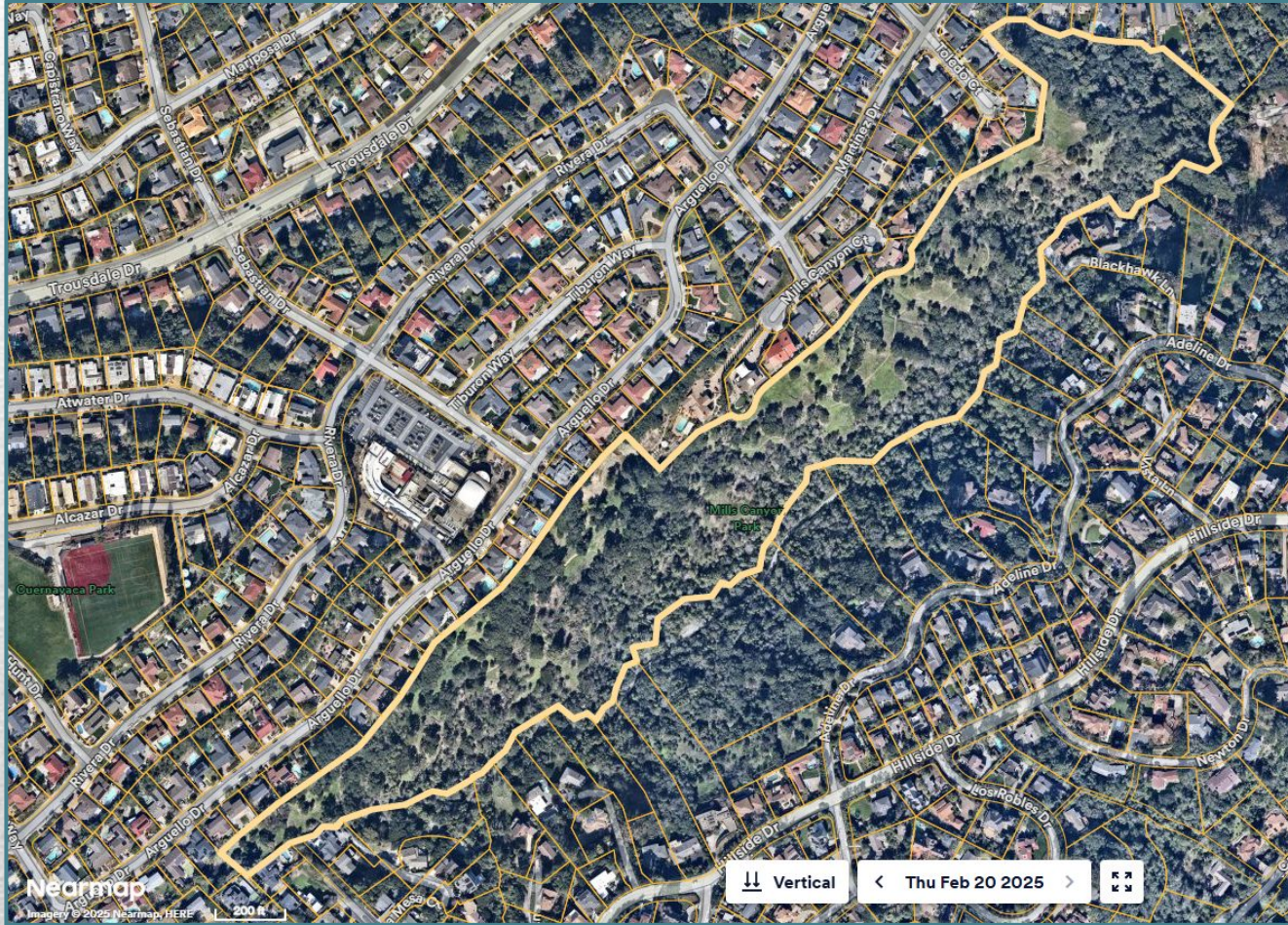


## Shaded Fuelbreak



# WUI Vegetation Management: Mills Canyon

Are you near a WUI area?



# California's Fire Changes

- Increasing acres burned
- Longer fire season
  - Drought
  - Dead Trees

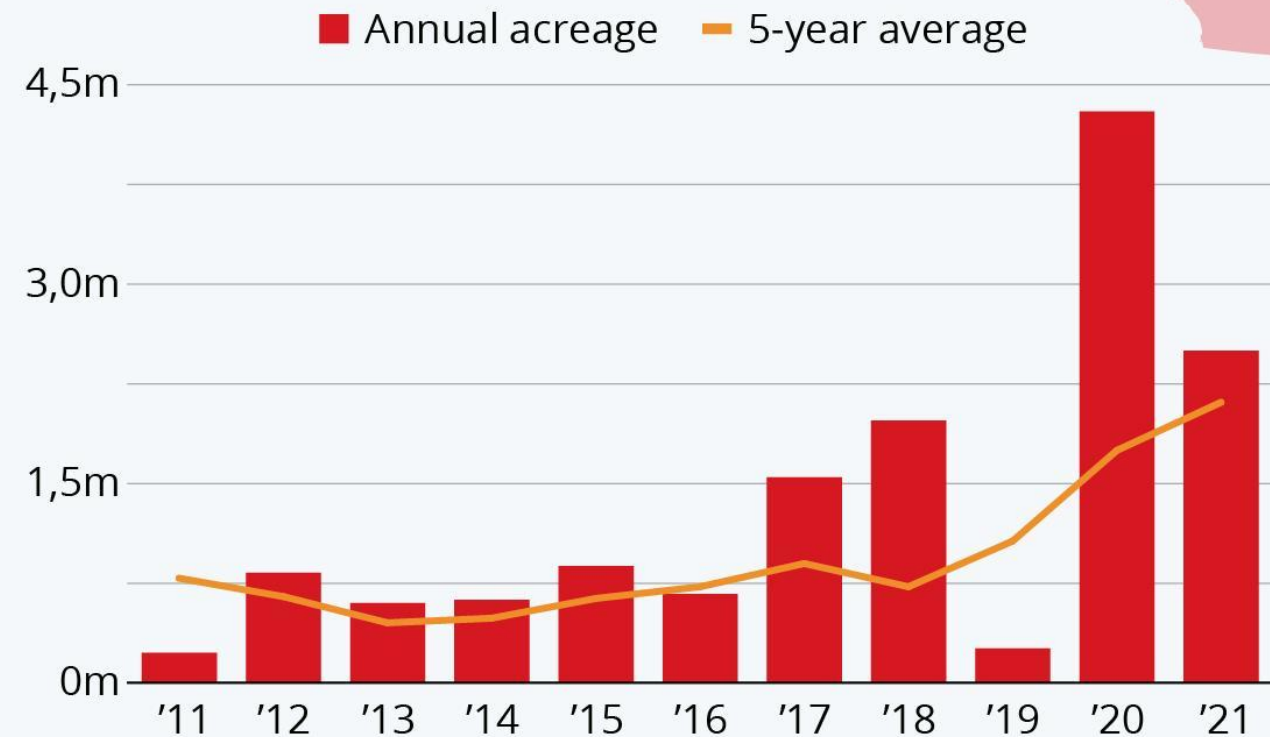


# CA Acres Burned

Ten-year data trend  
2011-2021

## The Growing Danger of Californian Wildfires

Number of acres burned  
by wildfires in California



Source: Cal Fire



statista



# More CA Fire Factors


- Increased temperatures
- Intense wind events
- Development in the WUI
- Legacy infrastructure
- Longer fire season
- Changing vegetation



# Fire Response

- Local fire resources
- Mutual threat zones and SRA
- State fire resources
- Aircraft and crews
- Incident command
- Law enforcement and OES
- Single ordering point for mutual aid
- Communications
- Incident complexity





# How You Can Protect Your Family & Neighbors

You can talk with your family, and plan, now.

Do you have children, pets, a go-bag, transportation, several routes, a destination?

Share the next two slides with family and neighbors, and have a conversation about how you would communicate with family members or neighbors during an emergency or evacuation.

**Communications / Alerts**

**Evacuation**

---

# Communications / Alerts

- Preparing the community: **Ready, Set, GO!**
- Informing the community: **Red Flag Warnings**
- Alerting the community: **When a fire breaks out**



SMC Alert sign-up:  
**[SMCalert.info](http://SMCalert.info)**

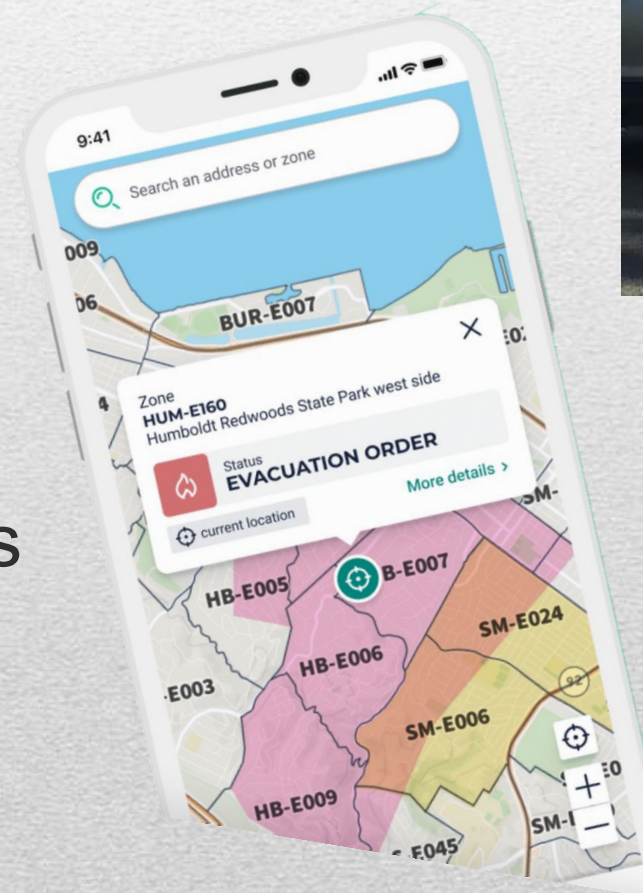


# Evacuation

- Planning for evacuation
- Warnings vs. Orders
- Considerations
  - Vulnerable neighbors, areas
  - *Already Know Your Routes*
  - Already have your Go-Bag
  - New Hi-Lo Siren
  - Go Early
  - Transportation (car, bike, pets)
  - Roads may be closed for incoming rigs



[protect.genasys.com](https://protect.genasys.com)



# How You Can Fire-Protect Your Home

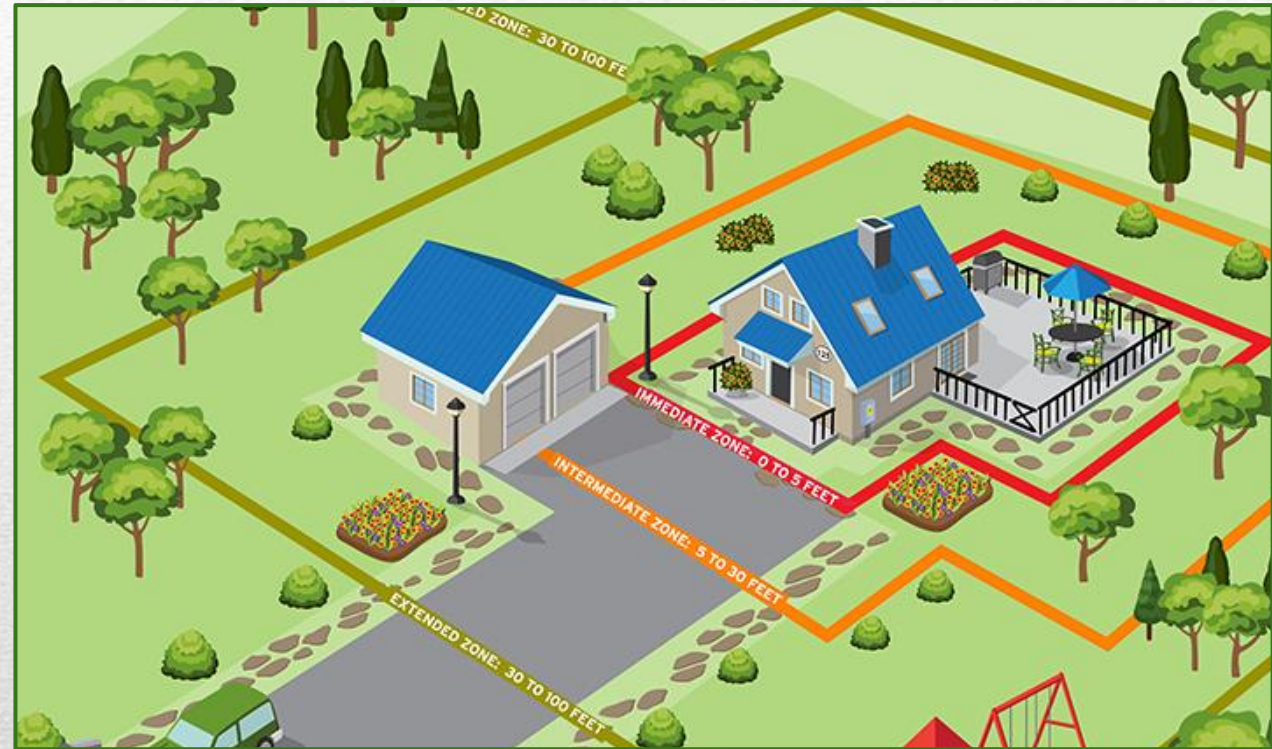
## Steps and Materials to improve Home Hardening

- Roof - Fire-resistant material or shingles
- Siding - Fire-resistant material (metal, stucco, stone)
- Vents - 1/8" Ember-resistant screening
- Gutters - Enclosed gutters
- Windows - Double-paned windows
- Fencing - Fire-resistant material (metal, stone)



# Things You Can Do - Ready, Set, GO!

- Defensible Yard Space
- Harden Your Home
- Have a Communication Plan
- Have an Evacuation Plan
- Make Your Go-Bag
- Don't Wait, Evacuate!



# What are We Doing About it?

- Education & Information materials
- Fire Detection Technology (peanuts, open-space cameras)
- Grant-funded Fuel Management
- Wildland Urban Interface (WUI) Inspections
- Evacuation Planning and Drills
- Mapping and Fuel Modeling



# How a Wildfire can Roll



# Video

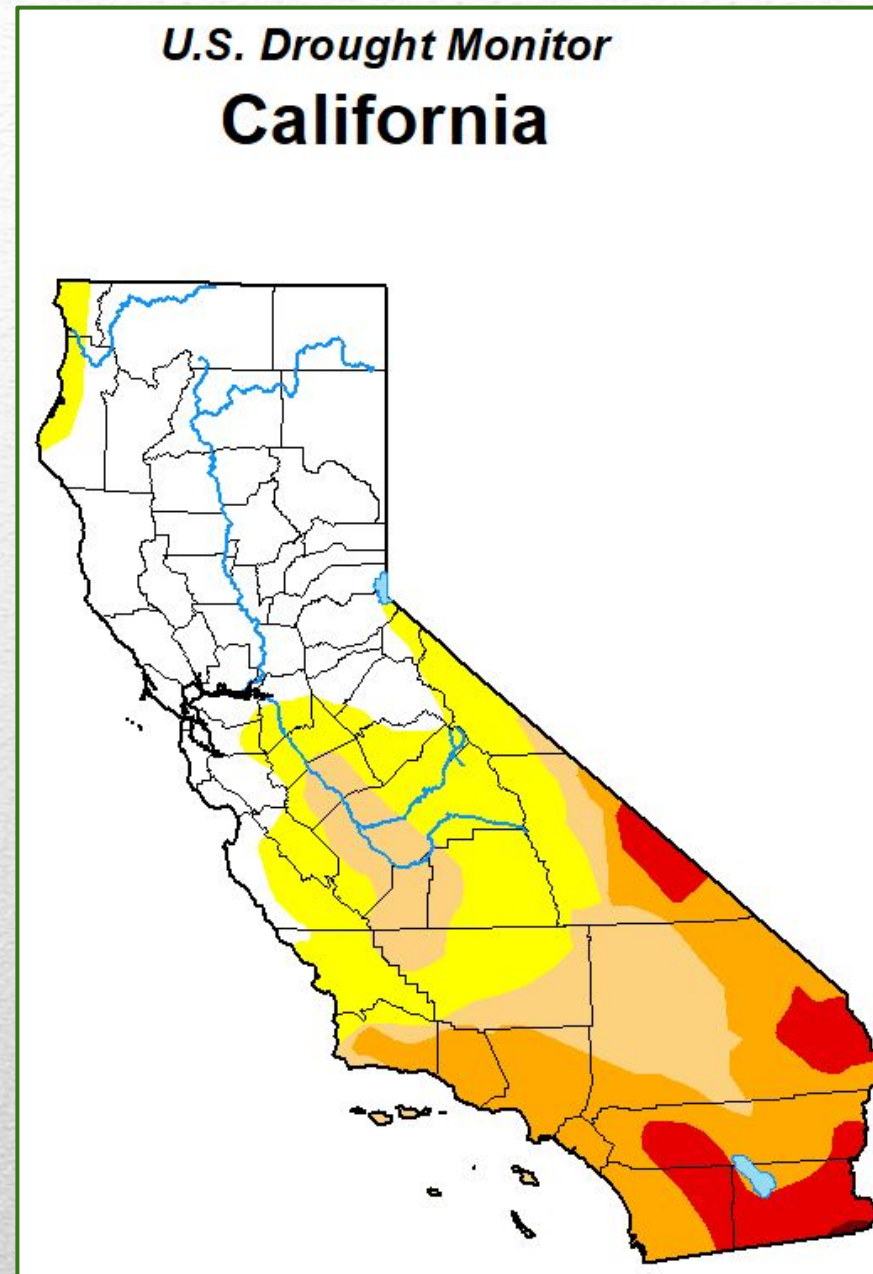


<https://www.youtube.com/watch?v=dcf8FRAqUww>



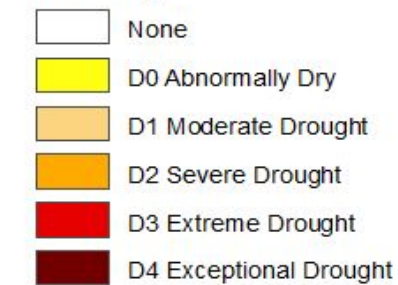
# Drought

- Current Drought Map
- Impact of Fire Season
- Predictive Services



**June 3, 2025**  
(Released Thursday, Jun. 5, 2025)  
Valid 8 a.m. EDT

Intensity:



*The Drought Monitor focuses on broad-scale conditions. Local conditions may vary. For more information on the Drought Monitor, go to <https://droughtmonitor.unl.edu/About.aspx>*

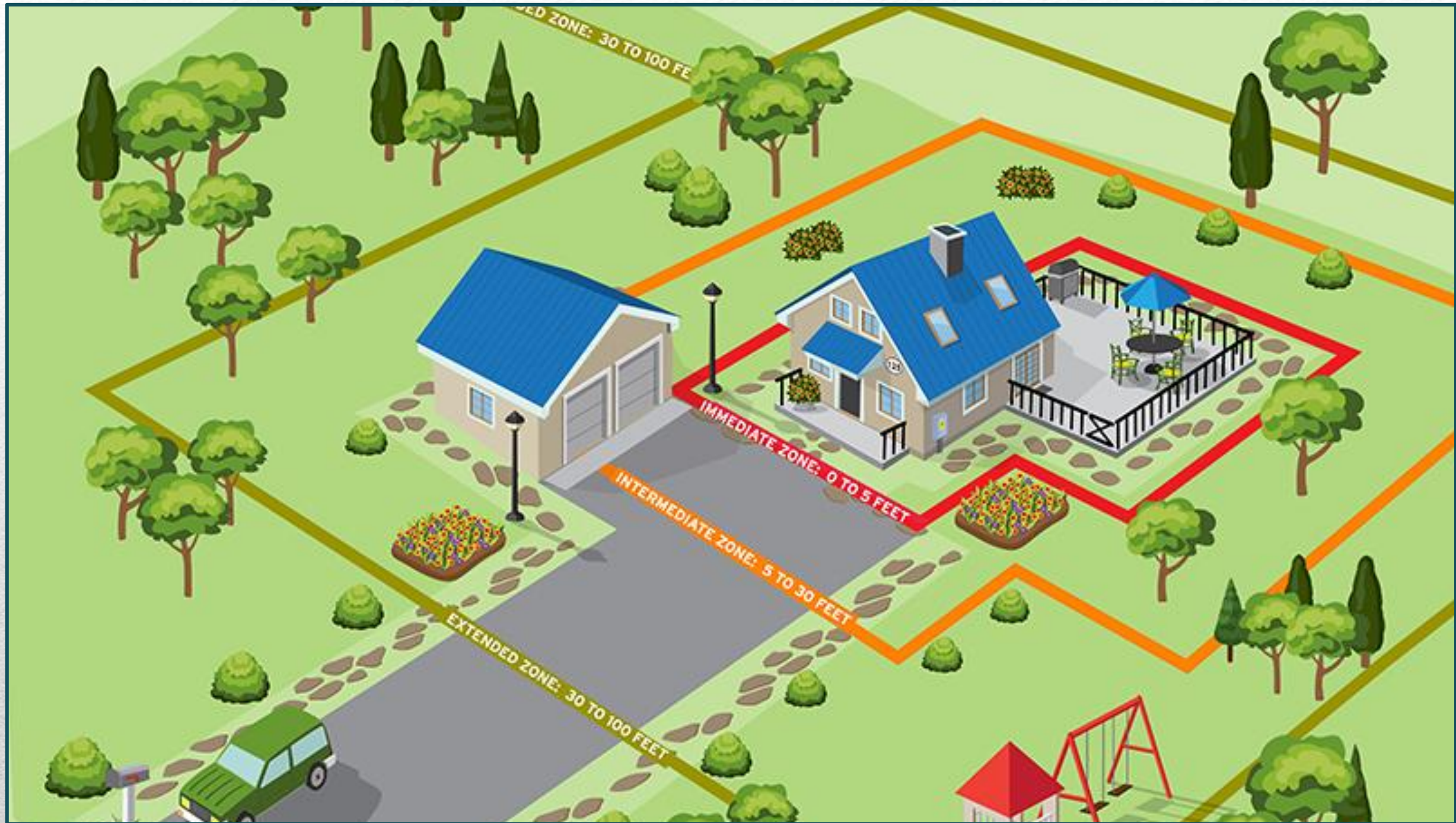
Author:

Brad Pugh  
CPC/NOAA



[droughtmonitor.unl.edu](https://droughtmonitor.unl.edu)





# CERT Program - Community Emergency Response Team

## GET INVOLVED IN CERT.

[Community Emergency Response Team]

### WHAT CERT CAN DO:



#### RESIDENTIAL & COMMUNITY CHECKS

Make sure family members and neighbors are safe and well following disasters.



#### TRAFFIC & CROWD MANAGEMENT

Control the flow of people during small power outages or large scale concert or sporting events.



#### EMERGENCY OPS CENTER STAFFING

Staff emergency operations centers to help organize and complete the response effort.



#### PUBLIC INFORMATION

Inform communities how to prepare and explain resources out there to help in case of emergency.



FEMA



# Firewise

FIREWISE is a National Fire Protection Association program

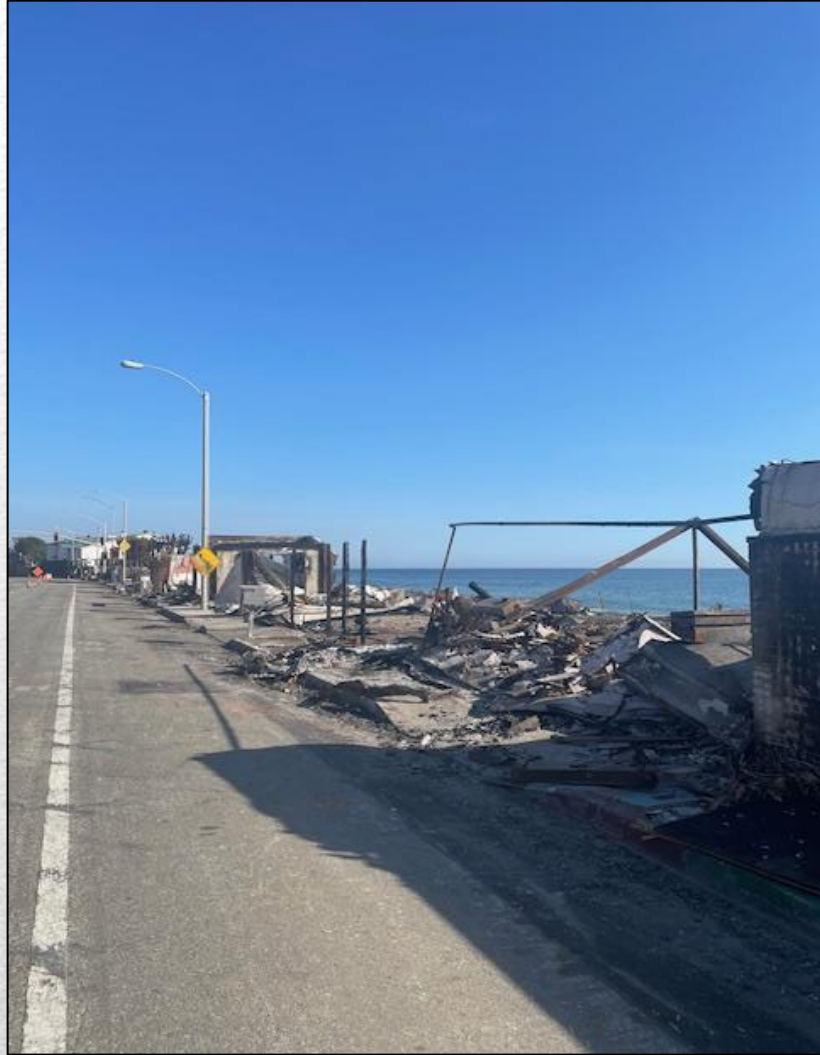
In April 2020, Hillsborough was officially recognized as a Firewise USA® community.

*Firewise Hillsborough mission:* To work with residents, the Town, and Central County Fire Department to provide education, support neighborhood projects, and advocate for a wildfire-resistive Hillsborough.

- A citizen's volunteer organization
- Certificates confirming for that your home is in a certified Firewise community for insurance purposes are available







# Q&A

Our speakers can answer specific questions following

*Thank You  
for coming out this morning!*

